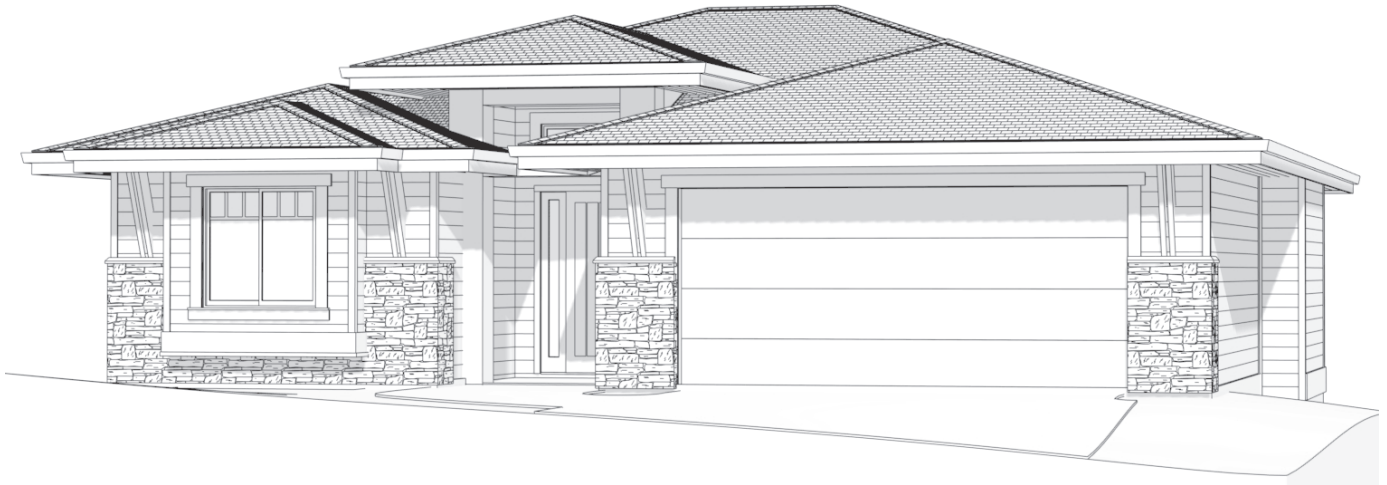


5044 TURTLE POND PLACE THE LINDEN



This brand new design, The Linden, is located at the top of our community along the highest boulevard on the South side of Turtle Mountain. From here the Linden is looking to the South East over the City of Vernon and is ideally situated to capture the morning sunrise and keep the deck cool for hot summer dinners.

With a large master suite featuring a raised tray ceiling, one of our biggest walk-in closets, and a 5-piece ensuite with a true water-closet washroom, the Linden has a focus on its owners. A kitchen featuring a walk-in pantry, stainless steel appliances, and an island certain to please any chef, accompanied by all the details of a custom designed home are part of this new Linden plan. An exclusive interior design has been created for this home with a selection of our most popular options and modifications to create our best value. Ask us for a complete specifications list and about potential upgrades and options.

For more information, please call 250-545-3999 or visit TurtleMountainVernon.com.

Bedrooms: 4

Bathrooms: 3

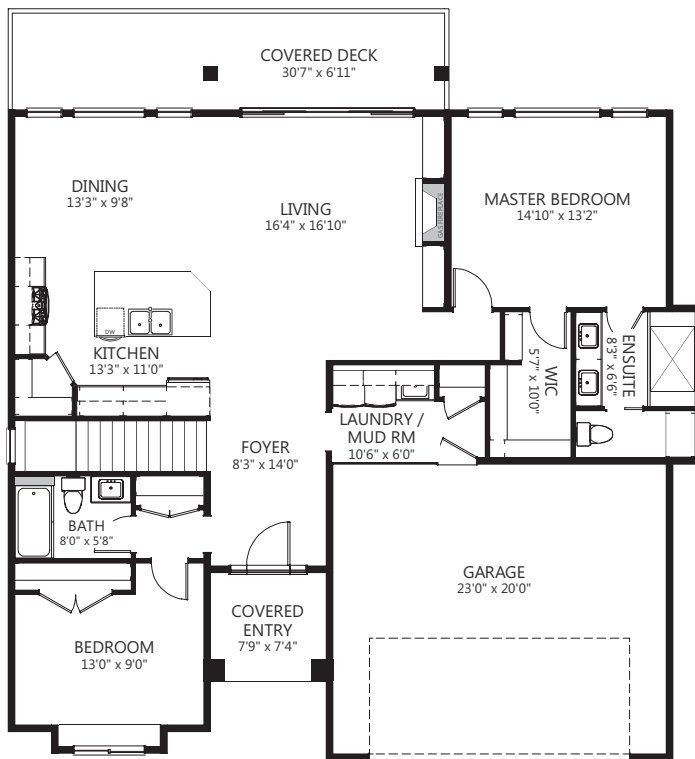
Completed Square Footage: 2,565 sq.ft.

Deck Square Footage: 211 sq.ft.

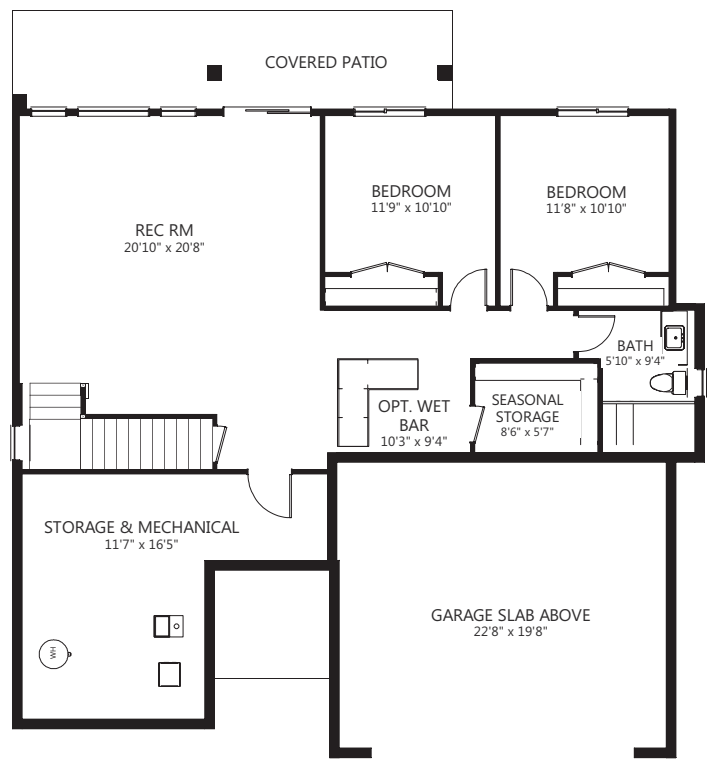
Interior Design Scheme: Grigio

PRICE: \$659,000

5044 TURTLE POND PLACE THE LINDEN



Main Level:
1,471 sq.ft.



Terrace Level:
1,094 sq.ft. (finished)
190 sq.ft. (unfinished)

