

5036 TURTLE POND PLACE THE ROWAN



This brand new custom designed home, The Rowan, is located at the top of our community along the highest boulevard on the South side of Turtle Mountain. From here the Rowan features exceptional views to the South over Okanagan Landing and the City of Vernon. This home comes complete with our Wesbild exterior package including fully landscaped front and rear yards, exterior accent lighting, and a custom-designed water feature.

The Rowan offers main flooring living for two people with a chef's kitchen and a large walk-in pantry, complete with organizers. A large master suite captures the view and leads to a luxurious ensuite and walk-in closet. The large garage features an extra nook for a work bench or large toys of all kinds. Our high-end Wesbild finishes can be found throughout including soft-close cabinetry, Kohler fixtures, stainless steel appliances, hardwood flooring, and inspired light fixtures. An additional 2 bedrooms and bathroom are located on the fully finished Terrace Level of this home, which will be move-in ready for July 2016.

For more information, please call 250-545-3999 or visit TurtleMountainVernon.com.

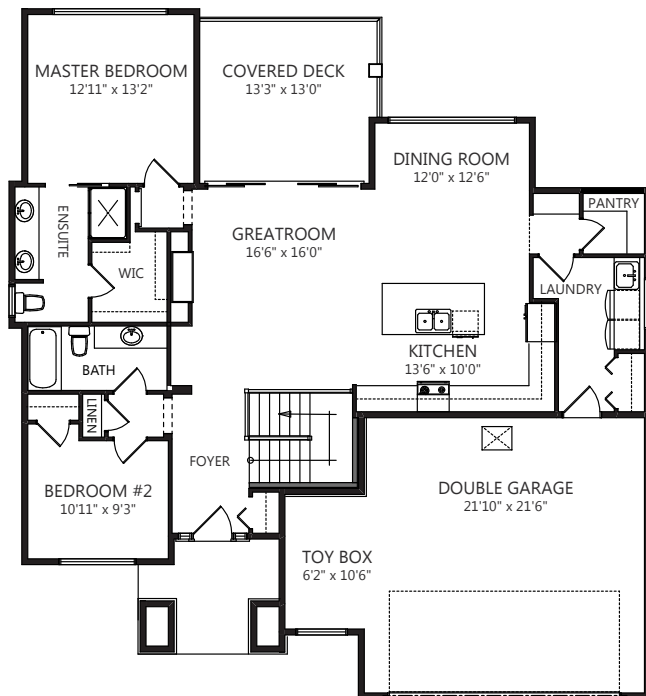
Bedrooms: 4

Bathrooms: 3

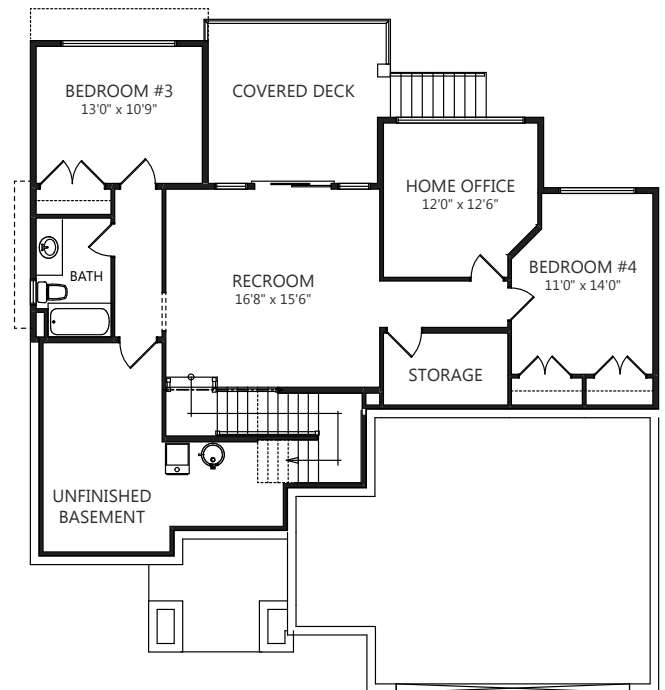
Completed Square Footage: 2,485 sq.ft.

Deck Square Footage: 172 sq.ft.

PRICE: \$689,000



Main Level:
1,471 sq.ft.



Terrace Level:
1,094 sq.ft. (finished)
190 sq.ft. (unfinished)

