

5028 TURTLE POND PLACE THE MAGNOLIA



This Magnolia plan is located on our newest neighbourhood, Turtle Pond Place, for spectacular views, presence, and privacy. Providing a sweeping view of the City and Turtle Mountain below this location is one that is sure to keep you glued to the windows and deck. This home comes complete with our Wesbild exterior package including fully landscaped front and rear yards, exterior accent lighting, and a custom-designed water feature.

This home, move-in ready for January 2016, is a custom take on our Magnolia floor plan, designed with a focus on enhancing the main floor living philosophy by matching an efficiently designed level-entry home and high-end high quality finishings including, large view windows with seating benches built-in, 11' ceilings, and a custom kitchen with quartz countertops. An additional 2 bedrooms and washroom are located on the fully finished Terrace Level which boasts extra height ceilings and oversized windows.

For more information, please call 250-545-3999 or visit TurtleMountainVernon.com.

Bedrooms: 4

Bathrooms: 3

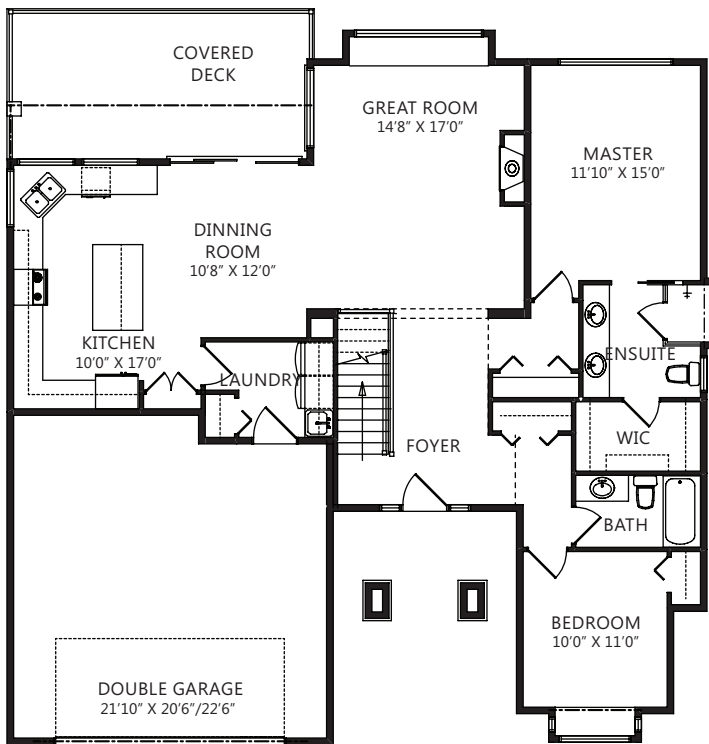
Completed Square Footage: 2,568 sq.ft.

Deck Square Footage: 222 sq.ft.

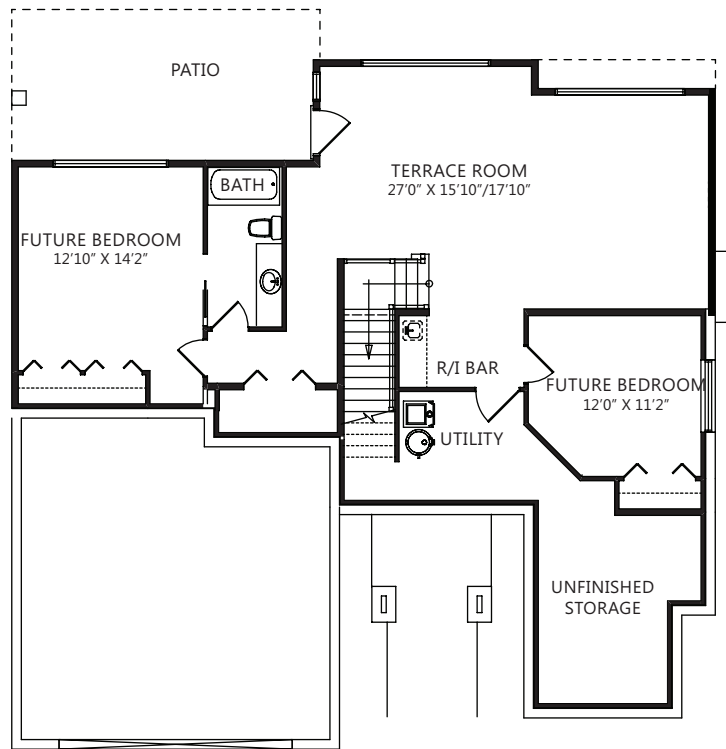
Interior Design Scheme: Bianco

PRICE: \$679,000

5028 TURTLE POND PLACE THE MAGNOLIA



Main Level:
1,458 sq.ft.



Terrace Level:
1,110 sq.ft. (finished)
311 sq.ft. (unfinished)