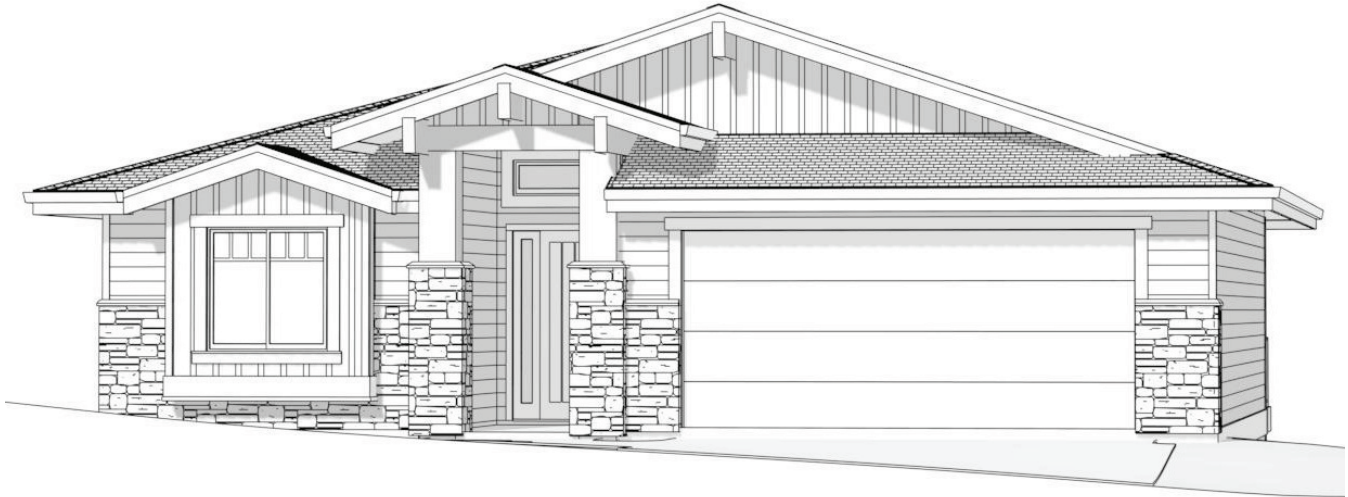


# 5076 TURTLE POND PLACE THE SPRUCE



This new home, the Spruce, is located at the peak of Turtle Mountain, offering exceptional views of the City of Vernon. Its Southeastern exposure is ideally positioned to capture the morning sunrise and keep the deck cool during the hot summer months.

Move-in ready for September 2016, The Spruce is a new custom designed home, featuring the finest finishes and forward-thinking interior design. Enter this home through a striking recessed entry and you will be greeted by raised 11' ceilings, an over-sized picture windows in the great room, and a large walk-through pantry off the kitchen. The main level also includes a large master bedroom with ensuite and walk-in-closet plus a guest bedroom. Other Wesbild finishes include soft-close cabinetry throughout the home, Kohler fixtures, stainless steel appliances, hardwood flooring, and inspired light fixtures. An additional 2 bedrooms and bathroom are located on the fully finished Terrace Level of this home.

**For more information, please call 250-545-3999 or visit [TurtleMountainVernon.com](http://TurtleMountainVernon.com).**

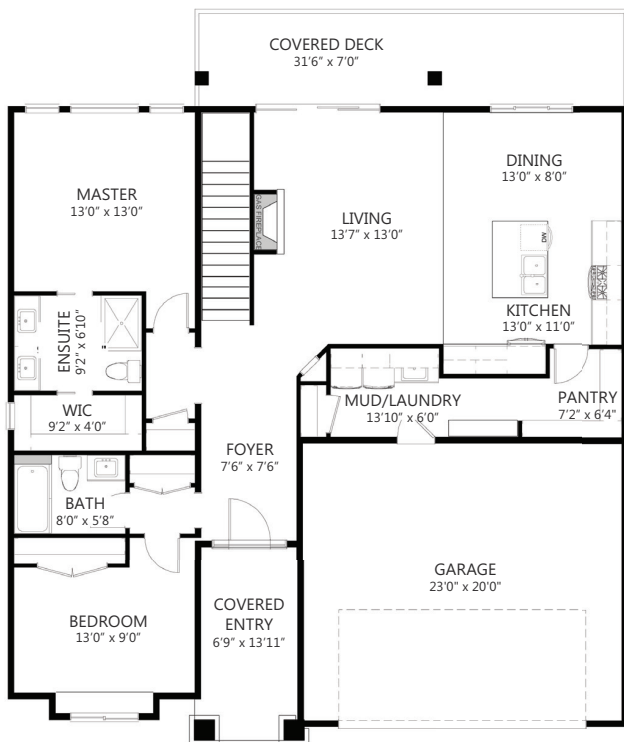
**Bedrooms:** 4

**Bathrooms:** 3

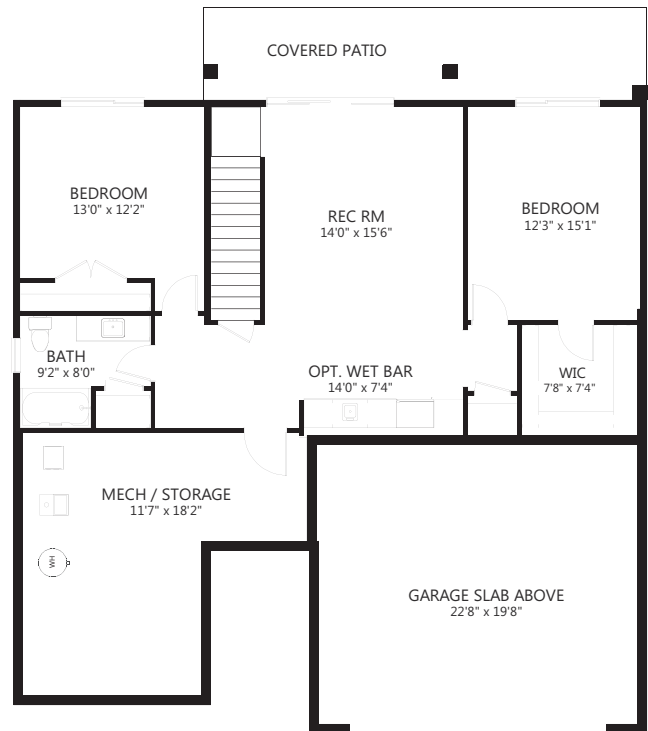
**Completed Square Footage:** 2,236 sq.ft.

**Deck Square Footage:** 220 sq.ft.

**PRICE: \$665,000**



**Main Level:**  
1,471 sq.ft.



**Terrace Level:**  
819 sq.ft. (finished)  
210 sq.ft. (unfinished)